

β-actin mouse monoclonal antibody manual

β-actin (MG3) Mouse Monoclonal Antibody

Product number	DIB2006	DIB2006L
specification	100ul	1ml

Product name: Anti-β-actin mouse monoclonal antibody

Antibody source: mouse IgG1

Krone Long: MG3

Concentration: 1mg/ml

Immunogen: human β-actin full-length protein as immunogen

Product description: β-Actin is the main component of the cytoskeleton and is widely expressed in eukaryotic cells. β-Actin has a molecular weight of 43KD, which is highly conservative and its expression in cells is relatively stable, so it is often used as an internal control for Western Blot detection systems. The company's β-Actin antibody has high titer, strong specificity, single and beautiful band pattern, and is one of the best products for WB experiments.

Recommended dilution: Western blot (WB): 1:1000—1:10000

Storage conditions: -20℃

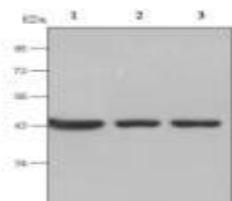
Effective period: 12 months

Solution composition: 0.01M PBS (PH7.4), 0.1% BSA, 0.02% sodium azide, 50% glycerol

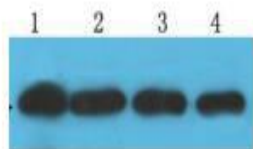
Response species: human, rat, mouse, fruit fly, chicken, rabbit, sheep, etc.

- Matters needing attention:
1. Please choose to use anti-mouse secondary antibody, such as goat anti-mouse IgG (H+L)-HRP (DIB 3006).
 2. Please determine the best antibody dilution according to the experiment.
 3. This product is only used for scientific research and cannot be used for clinical diagnosis.

Related information:



WB detection of β-actin (MG3) antibody, antibody diluted 1:5000, antigens are: Hela cell lysate (1), rat brain tissue (2), mouse brain tissue (3), 20 μg per well .



WB detection of β-actin(MG3) antibody, antigen It is Hela cell lysate, and the sample loading per well is 20 μg, the antibody ratio is 1:1000(1), 1:2000(2) And 1:4000(3), 1:8000(4).