

## GAPDH mouse monoclonal antibody manual

### GAPDH (MC4) Mouse Monoclonal Antibody

---

Product number	DIB2007	DIB2007L
specification	100ul	1ml

---

Product name: Anti-GAPDH mouse monoclonal antibody

Antibody source: mouse IgG1

Clone number: MC4

Concentration: 1mg/ml

Immunogen: Human GAPDH full-length protein is used as the immunogen.

Product description: GAPDH (glyceraldehyde-3-phosphate dehydrogenase) is a key enzyme involved in glycolysis and consists of 4 36KD subunits. GAPDH protein is expressed at high levels in almost all tissues, and is often used as an internal reference for Western Blot detection system. The company's GAPDH antibody is superior to similar products in terms of potency and specificity, and is currently one of the best internal control antibodies on the market.

Recommended dilution: Western blot (WB): 1:1000—1:10000

Storage conditions: Store at -20° C.

Validity period: 12 months. .

Solution composition: 0.01M PBS (PH7.4), 0.1% BSA, 0.02% sodium azide, 50% glycerol.

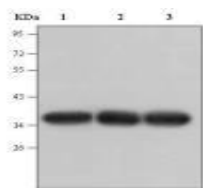
Response species: human, rat, mouse, chicken, rabbit, sheep, pig, etc.

Matters needing attention: 1. Please choose to use anti-mouse secondary antibody, such as goat anti-mouse IgG (H+L)-HRP (DIB 3006).

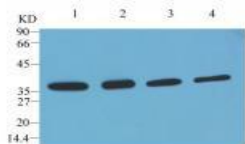
2. Please determine the best antibody dilution according to the experiment.

3. This product is only used for scientific research and cannot be used for clinical diagnosis.

Related information:



WB detection of GAPDH(MC4) antibody, antibody Diluted at 1:5000, the antigens were HeLa cells Lysate (1), rat brain tissue (2), mouse Brain tissue (3), 20  $\mu$ g per well.



WB detection of GAPDH(MC4) antibody Originally HeLa cell lysate, the sample loading amount per well is 10  $\mu$ g, the antibody was diluted with 1:5000 (1), 1:10000 (2) and 1:20000 (3), 1:40000 (4).