

## β-tubulin mouse monoclonal antibody manual

### β-tubulin (MG7) Mouse Monoclonal Antibody

Product number	DIB2008	DIB2008L
specification	100ul	1ml

Product name: anti-β-tubulin mouse monoclonal antibody

Antibody source: mouse IgG1

Kronlon: MG7

Concentration: 1mg/ml

Immunogen: human β-tubulin full-length protein as immunogen

Product description: Microtubules are an important part of the cytoskeleton and exist in all mammalian cells. Microtubules are composed of α-Tubulin and β-Tubulin with a molecular weight of about 55KD, and exist in the form of αβ heterodimers. The expression level of β-Tubulin protein is relatively constant, and it is often used as the internal control of the Western Blot detection system. The company's β-tubulin has the characteristics of high potency, good specificity, and good stability. It is one of the best internal control antibodies on the market.

Recommended dilution: Western blot (WB): 1:1000—1:10000

Immunohistochemistry (IHC): 1:100—1:1000

Storage conditions: Store at -20° C.

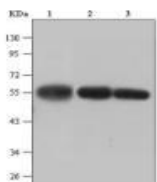
Validity period: 12 months.

Solution composition: 0.01M PBS (PH7.4), 0.1% BSA, 0.02% sodium azide, 50% glycerol

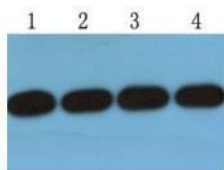
Response species: human, rat, mouse, sheep, rabbit, chicken, fruit flies, etc.

- Matters needing attention:
1. Please choose to use anti-mouse secondary antibody, such as goat anti-mouse IgG (H+L)-HRP (DIB 3006).
  2. Please determine the best antibody dilution according to the experiment.
  3. This product is only used for scientific research and cannot be used for clinical diagnosis

Related Information:



WB detection of β-tubulin (MG7) antibody, antibody dilution 1:5000, antigens are: Hela cell lysate (1), rat brain tissue (2), mouse brain tissue (3), 20 μg sample per well



WB detection of β-tubulin (MG7) antibody, the antigen is Hela cell lysate, the sample volume per well is 20 μg, the antibody is 1:2000 (1), 1:4000 (2) and 1:8000 (3), 1:16000 (4) dilution