

## GFP label mouse monoclonal antibody manual

### GFP-tag (ME11) Mouse Monoclonal Antibody

Product number	DIB1013	DIB1013L
specification	100ul	1ml

Product Name: Anti-GFP Tag Mouse Monoclonal Antibody

Antibody type: mouse IgG1

Clone number: ME11

Concentration: 1mg/ml

Immunogen: GFP full-length protein as antigen.

Product description: GFP (Green Fluorescent Protein) is a luminescent protein found in jellyfish. It is composed of 238 amino acids and has a molecular weight of 26KD. The green fluorescent protein gene is very stable after being transferred into host cells and has no effect on the physiology of most hosts. It is a commonly used reporter gene. The company's GFP antibody is a highly purified monoclonal antibody that can highly specifically recognize the GFP sequence in the fusion protein.

Recommended dilution: Western blot (WB): 1:1000—1:10000

Immunofluorescence (IF): 1:100—1:1000

Immunoprecipitation (IP): 1:100—1:1000

Solution composition: 0.01M PBS (PH7.4), 0.1% BSA, 0.02% sodium azide, 50% glycerol.

Storage conditions: Store at -20° C.

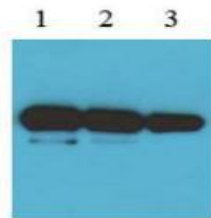
Validity period: 12 months.

Matters needing attention: 1. Please choose to use anti-mouse secondary antibody, such as goat anti-mouse IgG (H+L)-HRP (DIB3006).

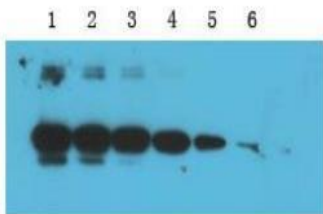
2. Please determine the best antibody dilution according to the experiment.

3. This product is only used for scientific research and cannot be used for clinical diagnosis.

Relevant data:



Use GFP protein to detect GFP-tag antibody (DIB1013), and the amount of protein loaded per hole is 100ng. The antibody was diluted 1:5000 (1), 1:10000 (2), and 1:20000 (3).



Detect the GFP-tag antibody (DIB1013) with GFP-containing protein, the antibody is diluted 1:5000, and the amount of protein loaded per well is 20ng (1), 10ng (2), 5ng (3), 2.5ng (4), 1.2 ng(5), 0.6ng(6).