

RFP label mouse monoclonal antibody manual

RFP-tag (MC8) Mouse Monoclonal Antibody

| | | |
|----------------|---------|----------|
| Product number | DIB1015 | DIB1015L |
| specification | 100ul | 1ml |

Product Name: Anti-RFP Tag Mouse Monoclonal Antibody

Antibody type: mouse monoclonal antibody IgG1

Clone number: MC8

Concentration: 1mg/ml

Immunogen: RFP full-length protein as antigen.

Product description: Red fluorescent protein (RFP) is derived from corals. Like the GFP protein, RFP can emit light without any external substrates and cofactors, which is very easy to detect. Therefore, RFP protein has been widely used in detection, tracing, and positioning. The company's RFP antibody is a highly purified monoclonal antibody that can highly specifically recognize the RFP protein sequence in the fusion protein.

Recommended dilution: Western blot (WB): 1:1000—1:10000

Solution composition: 0.01M PBS (PH7.4), 0.1% BSA, 0.02% sodium azide, 50% glycerol.

Storage conditions: Store at -20° C.

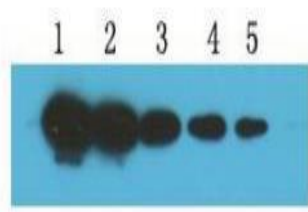
Validity period: 12 months.

Matters needing attention: 1. Please choose to use anti-mouse secondary antibody, such as goat anti-mouse IgG (H+L)-HRP (DIB3006).

2. Please determine the best antibody dilution according to the experiment.

3. This product is only used for scientific research and cannot be used for clinical diagnosis.

Relevant data:



RFP fusion protein was used to detect RFP-tag antibody (DIB1015), the antibody was diluted 1:5000, and the amount of protein loaded per hole was 20ng (1), 10ng (2), 5ng (3), 2.5ng (4), 1.2 ng(5).