

mCherry label mouse monoclonal antibody manual

mCherry-tag (MA4) Mouse Monoclonal Antibody

| | | |
|----------------|---------|----------|
| Product number | DIB1016 | DIB1016L |
| specification | 100ul | 1ml |

Product Name: Anti-mCherry Tag Mouse Monoclonal Antibody

Antibody type: mouse monoclonal antibody IgG1

Clone number: MA4

Concentration: 1mg/ml

Immunogen: Full-length Mccherry protein as antigen.

Product description: mCherry protein is originally derived from thorn cell animals and is a red fluorescent protein with better stability. In experiments such as genetic modification, mCherry protein is often used as a fluorescent tracer. The company's mCherry antibody is a highly purified monoclonal antibody that can highly specifically recognize the mCherry protein sequence in the fusion protein.

Recommended dilution: Western blot (WB): 1:1000—1:10000

Immunofluorescence (IF): 1:100—1:1000

Immunoprecipitation (IP): 1:100—1:1000

Solution composition: 0.01M PBS (PH7.4), 0.1% BSA, 0.02% sodium azide, 50% glycerol.

Storage conditions: Store at -20° C.

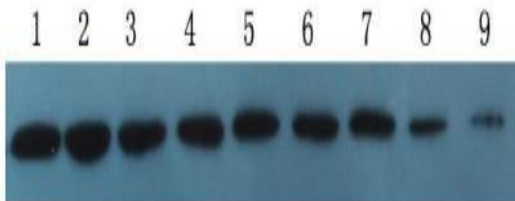
Validity period: 12 months.

Matters needing attention: 1. Please choose to use anti-mouse secondary antibody, such as goat anti-mouse IgG (H+L)-HRP (DIB3006).

2. Please determine the best antibody dilution according to the experiment.

3. This product is only used for scientific research and cannot be used for clinical diagnosis.

Relevant data:



Use mCherry protein to detect mCherry-tag antibody (DIB1016). The antibody is diluted 1:5000. The amount of protein loaded per hole is 250ng (1), 125ng (2), 62ng (3), 30ng (4), 15ng (5), 8ng(6), 4ng(7), 2ng(8), 1ng(9).