

Sumo label mouse monoclonal antibody manual

Sumo-tag (MC11) Mouse Monoclonal Antibody

Product number	DIB1017	DIB1017L
specification	100ul	1ml

Product Name: Anti-Sumo Tag Mouse Monoclonal Antibody

Antibody type: mouse IgG

Clone number: MC11

Concentration: 1mg/ml

Immunogen: Full-length Sumo protein as antigen.

Product description: Sumo tag protein can greatly increase the solubility of the fusion protein, and can be accurately excised by protease when necessary. The company's Sumo antibody is a highly purified monoclonal antibody that can highly specifically recognize the Sumo protein sequence in the fusion protein.

Recommended dilution: Western blot (WB): 1:1000—1:10000

Solution composition: 0.01M PBS (PH7.4), 0.1% BSA, 0.02% sodium azide, 50% glycerol.

Storage conditions: Store at -20° C.

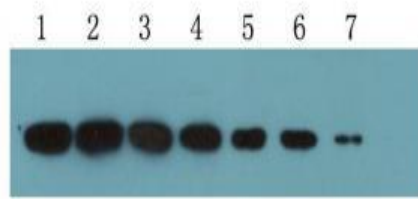
Validity period: 12 months.

Matters needing attention: 1. Please choose to use anti-mouse secondary antibody, such as goat anti-mouse IgG (H+L)-HRP (DIB3006).

2. Please determine the best antibody dilution according to the experiment.

3. This product is only used for scientific research and cannot be used for clinical diagnosis.

Relevant data:



Use Sumo tag fusion protein to detect Sumo-tag antibody (DIB1017), the antibody is diluted 1:5000, and the amount of protein loaded per well is 1 μ g (1), 500ng (2), 250ng (3), 125ng (4), 62ng. (5), 31ng(6), 15ng(7).